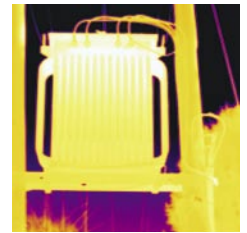
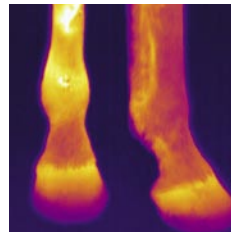
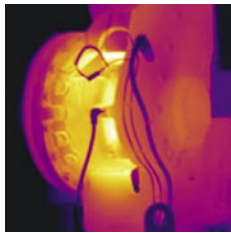
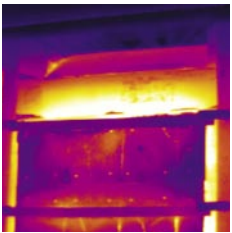


About Thermaltec

- ▶ Independent company
- ▶ Qualified and knowledgeable
- ▶ ITC certified
- ▶ Enhanced Criminal Records Bureau clearance
- ▶ Professional, reliable and cost effective
- ▶ One off or programmed surveys/inspections
- ▶ Guaranteed impartial advice
- ▶ Members of UKTA, BINDT and IET
- ▶ High-specification equipment



Thermaltec is an independent company supplying thermal imaging surveys and inspections to domestic, commercial and industrial organisations in the UK and abroad.

With over 25 years electrical, mechanical and plant maintenance experience, our qualified and knowledgeable ITC certified and Criminal Records Bureau cleared engineers provide a professional, reliable and cost-effective service tailored to the client's individual requirements.

Whether you are interested in using thermal imaging on an individual one-off basis or as part of a predictive or preventative maintenance programme, our independent status guarantees totally confidential and impartial advice on fault diagnosis together with advice for corrective and remedial action, should it be required.

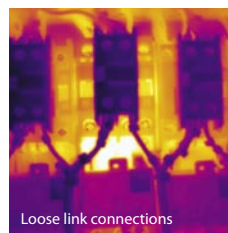
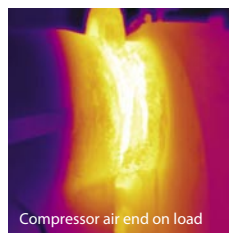
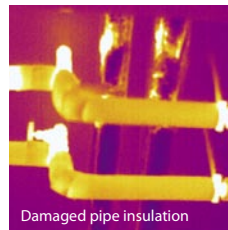
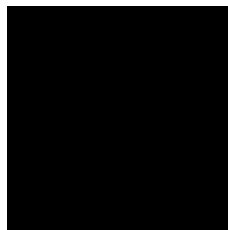
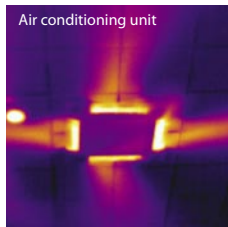
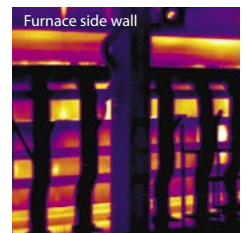
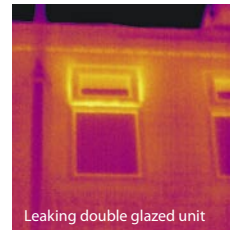
Thermaltec are proud to be members of The United Kingdom Thermography Association (UKTA), The British Institute of Non Destructive Testing (BINDT) and The Institution of Engineering and Technology (IET).

Thermography, or thermal imaging as it is more widely known, is now regarded as the most consistently accurate multi-purpose diagnostic technique available for condition monitoring and predictive maintenance.

Benefits of thermographic surveys

- ▶ Surveys are non-invasive and non-destructive allowing the survey to be completed whilst plant and equipment is running, in production and on load.
- ▶ Surveys are real time and produce fast, accurate and immediate temperature measurement and fault detection.
- ▶ Increased reliability and efficiency of plant and equipment resulting in reduced breakdowns and stoppages and significantly reduced maintenance costs and production losses.
- ▶ Assists businesses to comply with *The Electricity at Work Act* by complementing the electrical periodic test and inspection and helping to prove the integrity and safety of electrical systems and equipment.

- ▶ Assists businesses to comply with insurance requirements and complements their existing risk avoidance measures.
- ▶ Surveys can be incorporated into existing predictive and preventative maintenance programmes.
- ▶ Surveys can be performed at a convenient time and tailored to each client's individual requirements.
- ▶ Increased energy efficiency.
- ▶ Increased capital equipment lifespan.
- ▶ Increased safety.
- ▶ Reduced risk of fire.



Applications for thermography include:

- ▶ Condition monitoring
- ▶ Electrical systems
- ▶ Mechanical systems
- ▶ Furnace and kiln refractory and insulation integrity surveys
- ▶ Building surveys
- ▶ Pipe work surveys
- ▶ Bulk storage hopper and tank surveys
- ▶ Cold store insulation and door seal surveys
- ▶ Veterinary applications

Contact us for further information on how thermal imaging can enhance your company's performance and help detect problems before they happen – saving you lost production time and money.

Thermaltec Ltd
42 The Drive
Tonbridge
Kent
TN9 2LR

telephone: +44(0)1732 362385
fax: +44(0)1732 362385
mobile: 07920 772990
email: david@thermaltec.co.uk
website: www.thermaltec.co.uk

